



STONE MODEL &
RG SCAN PROTOCOL

QUICK GUIDE

3D IMAGING

– Stone model & RG scan protocol

ORTHOPANTOMOGRAPH™ OP300



INSTRUMENTARIUM

Stone model CT scan | for single implant and partially edentulous cases

Scan the patient with an open bite by securing the bite with cotton pads.



- Install positioning plate
- Position stone model as shown below (it is recommended to use a sponge or a foam under radiographic guide during the scan)



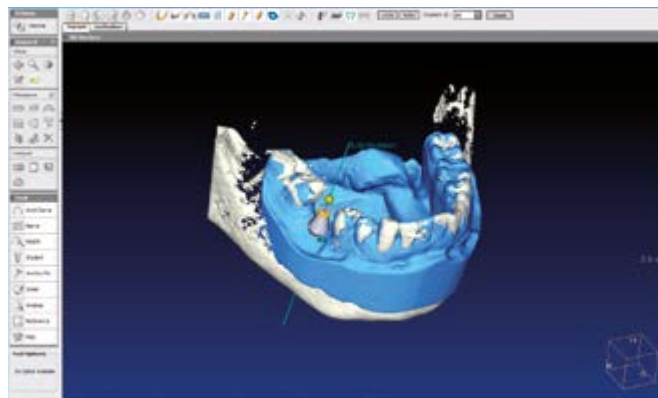
- Take scout image with default values
- Correct position if needed



Select same resolution and parameters as in patient scan.



Start the planning with drill guide planning software.



Radiographic guide | Double scan for fully edentulous cases

Scan the patient wearing a radiographic guide with radio-opaque markers.



- Install positioning plate
- Position radiographic guide as shown below (it is recommended to use a sponge or a foam under radiographic guide during the scan)



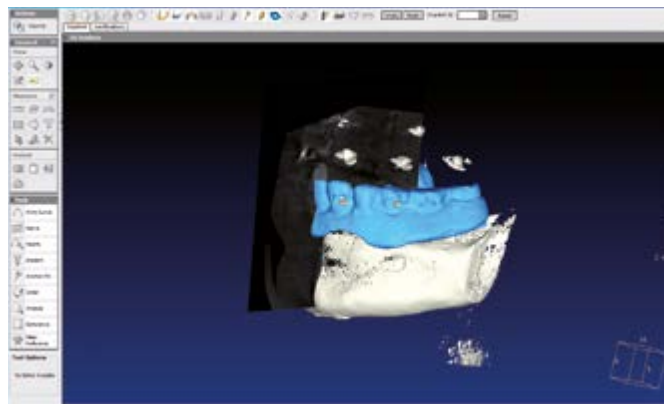
- Take scout image with default values
- Correct position if needed



Select same resolution and parameters as in patient scan.



Start the planning with drill guide planning software.



Headquarters

Instrumentarium Dental
Nahkkelantie 160
P.O. Box 20
FI-04300 Tuusula
Finland
Tel. +358 10 270 2000
Fax +358 10 270 2230
e-mail: info@instrudental.com

USA

Instrumentarium Dental
11727 Fruehauf Drive
Charlotte, NC 28273
U.S.A
Tel. 800-558-6120
Fax. 877-292-6050
e-mail: KKG.Imaging.CS@kavokergroup.com

Instrumentarium Dental develops, manufactures and markets high-tech systems and solutions for dental and maxillo-facial imaging. We work in close co-operation with dental professionals, universities and other research centers in our quest to develop solutions that will meet and exceed the expectations of our customers. As the establisher of panoramic X-ray imaging, we are committed to providing high clinical performance while still maintaining simplicity, ease of use and workflow efficiency.

The Instrumentarium Dental product portfolio consists of a full range of premium quality imaging solutions for intraoral, extraoral and 3D imaging. For more detailed information about our products, please visit www.instrumentariumdental.com.

Instrumentarium Dental reserves the right to make changes to specifications and features shown herein, or to discontinue the product described at any time without notice or obligation. Contact your Instrumentarium Dental representative for the most current information. CE marked according to Medical Device Directive (NB 0537). Electrical safety according to IEC 60601-1. Operations comply with ISO 13485:2003, ISO 9001:2008, and ISO 14001:2004.

ORTHOPANTOMOGRAPH™ is a registered trademark or a trademark of Instrumentarium Dental in the United States and/or other countries.

All other trademarks are property of their respective owners.

www.instrumentariumdental.com